

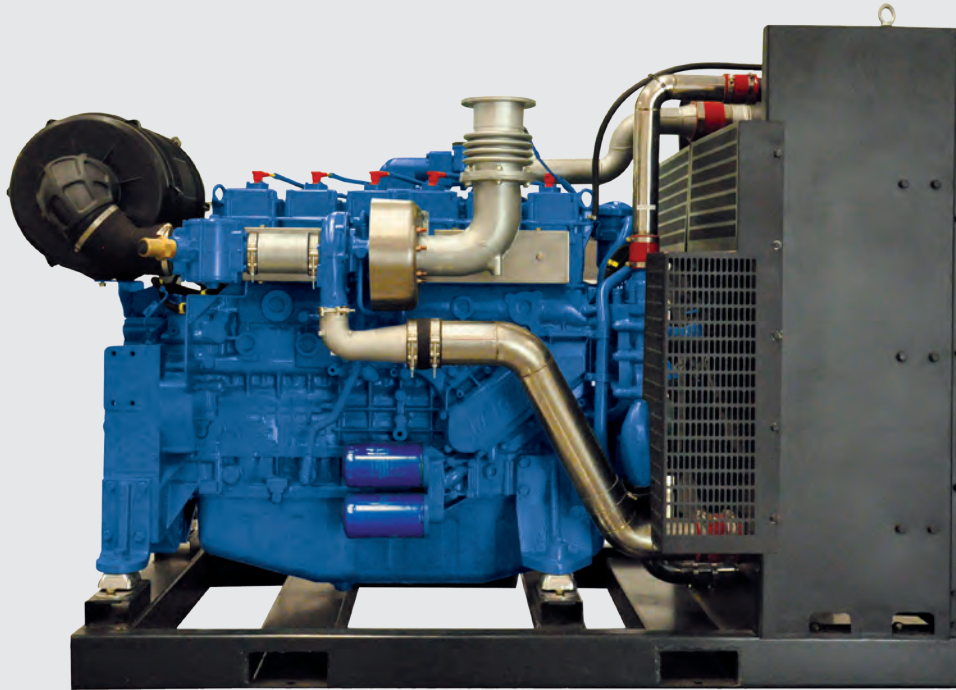
# 13 Liter



NATURAL GAS ENGINES



## AMERICA



*G-Drive Natural Gas Engine*

### SCALE

World's Largest Heavy Duty Engine Manufacturer (2L - 580L)

### VALUE

Unmatched Scale Delivers Unmatched Value

### EXPERIENCE

Decades of Natural Gas Engine Manufacturing. Over 3 Million Engines Currently In Service

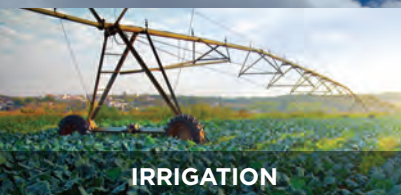
### LOCAL

Engineering, Expertise, Support, and Suppliers.

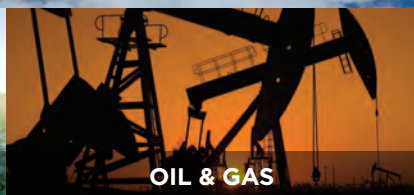
### TRUSTED

Premier, Global Engine Companies and Packagers Choose Us

## WORLD'S LARGEST NATURAL GAS ENGINE MANUFACTURER



IRRIGATION



OIL & GAS



POWER GENERATION



GAS COMPRESSION

[www.WeichaiAmerica.com](http://www.WeichaiAmerica.com)

# 13 Liter : G-Drive Natural Gas Engine

ENGINE SPEED (RPM)	ENGINE OUTPUT (kWm)		FUEL TYPE
	PRIME POWER	STAND-BY POWER	
1800	225	300	Natural Gas, Wellhead Gas, LPG

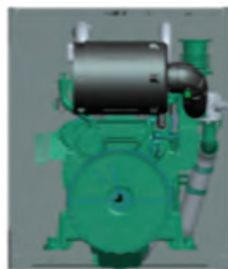
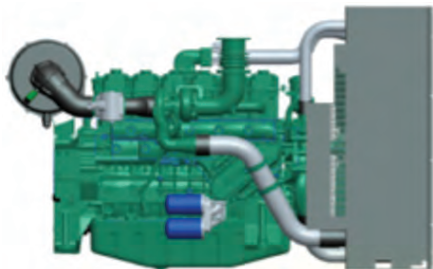
## GENERAL SPECIFICATIONS

Bore & Stroke	127 x 165 mm
Displacement	12.54 L
Cylinder Number	6
Compression Ratio	9.75:1
Governor Method	Electronic TA
Emissions	U.S. E.P.A. Certified 2016



## DIMENSIONS AND WEIGHTS

	WITH RADIATOR	FAN TO AIR CLEANER (without radiator)
Length	2136 mm / 84.0 in	1724 mm / 67.9 in
Width	1133 mm / 44.6 in	985 mm / 38.8 in
Height	1350 mm / 53.0 in	1218 mm / 48 in
Dry Weight	1182 kg / 2606 lbs	1060 kg / 2337 lbs



## FEATURES

### Engine and Block

- Cast Iron Block
- One-Piece Forged Crankshaft
- Replaceable Dry Cylinder Liners
- Forged Connecting Rod Aluminum Alloy Pistons with Gallery Oil Cooling

### Intake Air and Exhaust System

- Separate Cast Iron Cylinder Heads
- Hardened Valves and Valve Seats
- Turbocharged and After Cooled
- Rear Mounted, Replaceable Dry Air Cleaner with Restriction Indicator
- Segmented Exhaust Manifold

### Fuel/Aftertreatment

- Natural Gas, Wellhead Gas, LPG
- 3-Way Catalyst

### Cooling System

- Poly V-Belt Driven Water Pump and Pusher Fan

### Lubrication System

- Cast, Flat Bottom, High Capacity Oil Pan (36L)
- High Capacity, Gear Driven Oil Pump
- Cartridge-Type Filters

### Engine Control System

- US Proven ECU, Fuel System and Engine Control
- Engine Protection
- CANBUS J1939 Interface
- Telematics Compatibility

### Flywheel and Housing

- Variety of Flywheels (11.5", 14"), Ring Gears and Housing available (SAE #1, #3)

Give us a call at 847-725-7030 for more information about our products.



**Weichai America Corp.**  
3100 Golf Road  
Rolling Meadows, IL 60008  
(847) 725-7030

Sales@WeichaiAmerica.com

Visit us on the web at:  
<http://www.WeichaiAmerica.com>