

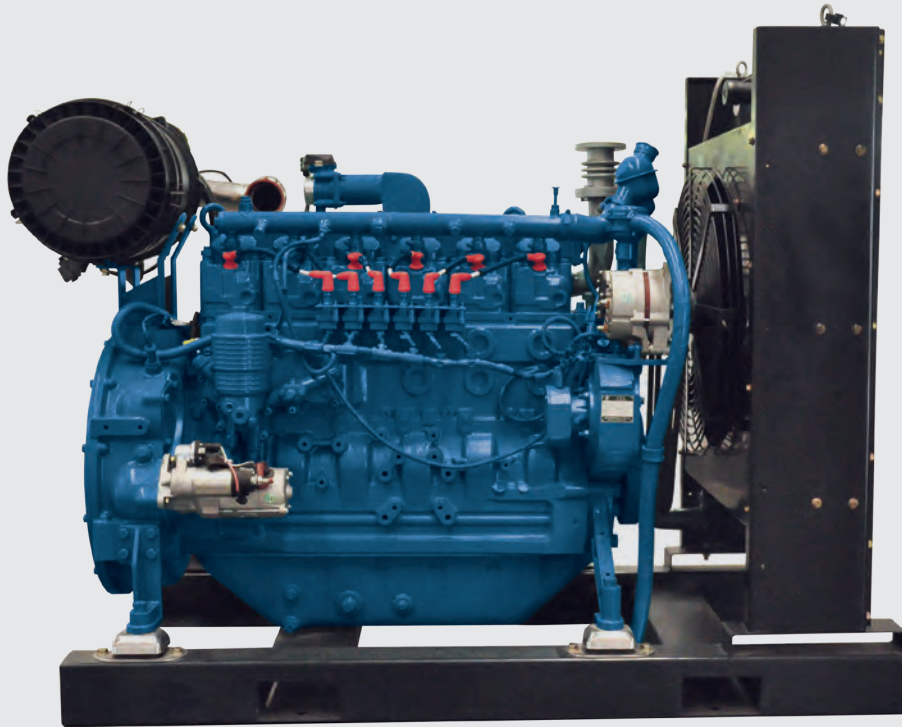
6 Liter



NATURAL GAS ENGINES



AMERICA



G-Drive Natural Gas Engine

SCALE

World's Largest Heavy Duty Engine Manufacturer (2L - 580L)

VALUE

Unmatched Scale Delivers Unmatched Value

EXPERIENCE

Decades of Natural Gas Engine Manufacturing. Over 3 Million Engines Currently In Service

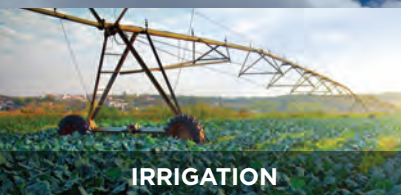
LOCAL

Engineering, Expertise, Support, and Suppliers.

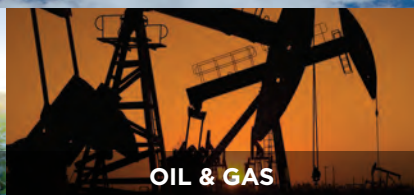
TRUSTED

Premier, Global Engine Companies and Packagers Choose Us

WORLD'S LARGEST NATURAL GAS ENGINE MANUFACTURER



IRRIGATION



OIL & GAS



POWER GENERATION



GAS COMPRESSION

www.WeichaiAmerica.com

6 Liter : G-Drive Natural Gas Engine

ENGINE SPEED (RPM)	ENGINE OUTPUT (kWm)		FUEL TYPE
	PRIME POWER	STAND-BY POWER	
1800	75	125	Natural Gas, Wellhead Gas, LPG

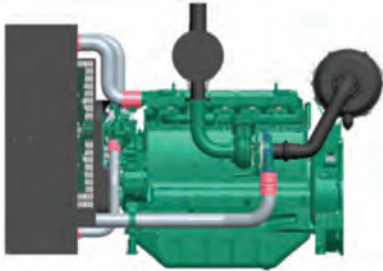
GENERAL SPECIFICATIONS

Bore & Stroke	105 x 130 mm
Displacement	6.75 L
Cylinder Number	6
Compression Ratio	9.75:1
Governor Method	Electronic TA
Emissions	U.S. E.P.A. Certified 2016



DIMENSIONS AND WEIGHTS

	WITH RADIATOR	FAN TO AIR CLEANER (without radiator)
Length	1613 mm / 63.5 in	1240 mm / 48.8 in
Width	717 mm / 28.2 in	728 mm / 28.7 in
Height	1219 mm / 48.0 in	998 mm / 39.3 in
Dry Weight	840 kg / 1852 lbs	750 kg / 1653 lbs



FEATURES

Engine and Block

- Cast Iron Block
- One-Piece Forged Crankshaft
- Replaceable Dry Cylinder Liners
- Forged Connecting Rod Aluminum Alloy Pistons with Gallery Oil Cooling

Intake Air and Exhaust System

- Separate Cast Iron Cylinder Heads
- Hardened Valves and Valve Seats
- Turbocharged and After Cooled
- Rear Mounted, Replaceable Dry Air Cleaner with Restriction Indicator
- Segmented Exhaust Manifold

Fuel/Aftertreatment

- Natural Gas, Wellhead Gas, LPG
- 3-Way Catalyst

Cooling System

- Poly V-Belt Driven Water Pump and Pusher Fan

Lubrication System

- Cast, Flat Bottom, High Capacity Oil Pan (24L)
- High Capacity, Gear Driven Oil Pump
- Cartridge-Type Filters

Engine Control System

- US Proven ECU, Fuel System and Engine Control
- Engine Protection
- CANBUS J1939 Interface
- Telematics Compatibility

Flywheel and Housing

- Variety of Flywheels (10", 11.5"), Ring Gears and Housing available (SAE #1, #3)

Give us a call at 847-725-7030 for more information about our products.



Weichai America Corp.
3100 Golf Road
Rolling Meadows, IL 60008
(847) 725-7030

Sales@WeichaiAmerica.com

Visit us on the web at:
<http://www.WeichaiAmerica.com>