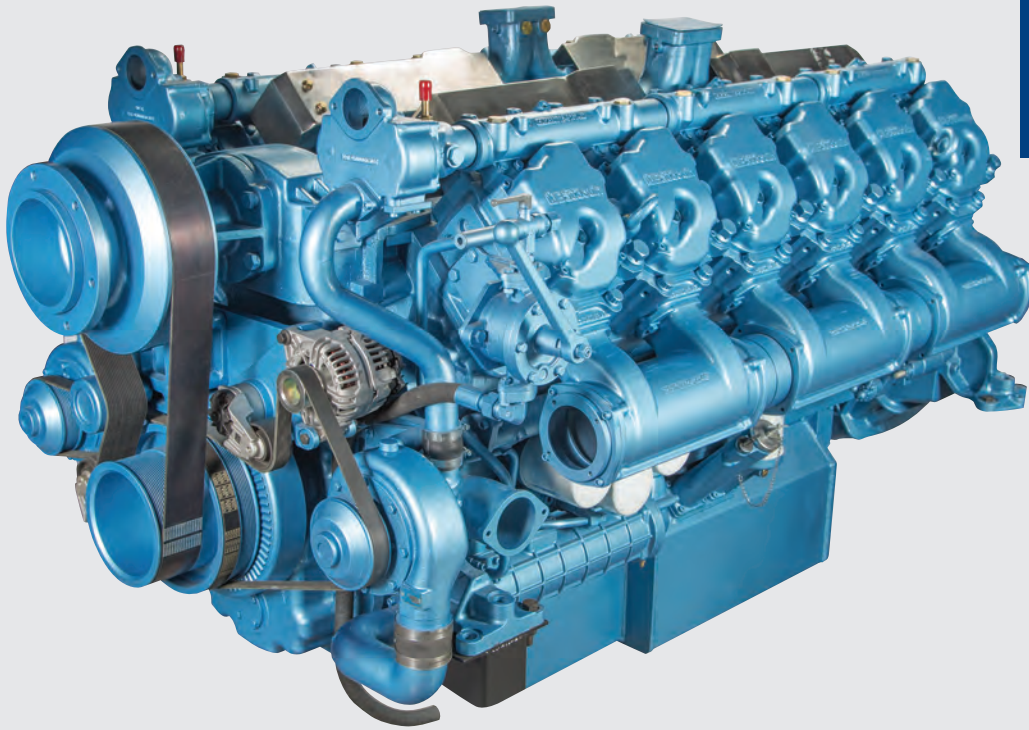


32 Liter



NATURAL GAS ENGINES



AMERICA



G-Drive Natural Gas Engine

SCALE

World's Largest Heavy Duty Engine Manufacturer (2L - 580L)

VALUE

Unmatched Scale Delivers Unmatched Value

EXPERIENCE

Decades of Natural Gas Engine Manufacturing. Over 3 Million Engines Currently In Service

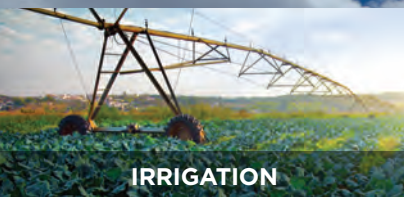
LOCAL

Engineering, Expertise, Support, and Suppliers.

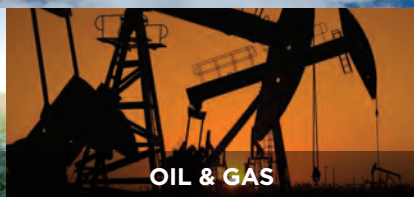
TRUSTED

Premier, Global Engine Companies and Packagers Choose Us

WORLD'S LARGEST NATURAL GAS ENGINE MANUFACTURER



IRRIGATION



OIL & GAS



POWER GENERATION



GAS COMPRESSION

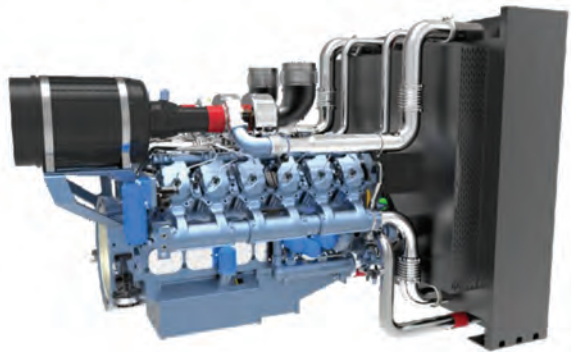
www.WeichaiAmerica.com

32 Liter : G-Drive Natural Gas Engine

ENGINE SPEED (RPM)	ENGINE OUTPUT (kWm)		FUEL TYPE
	PRIME POWER	STAND-BY POWER	
1800	550	700	Natural Gas, Wellhead Gas, LPG

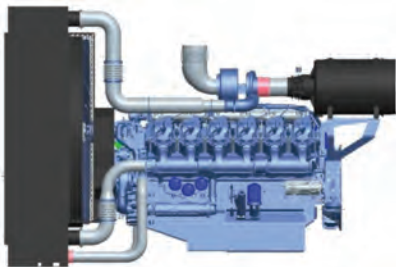
GENERAL SPECIFICATIONS

Bore & Stroke	150 x 150 mm
Displacement	31.8 L
Cylinder Number	12
Compression Ratio	9.75:1
Governor Method	Electronic TA
Emissions	U.S. E.P.A. Certified 2016



DIMENSIONS AND WEIGHTS

	WITH RADIATOR	FAN TO AIR CLEANER (without radiator)
Length	3229 mm / 127.1 in	2446 mm / 96.3 in
Width	1686 mm / 66.4 in	1521 mm / 59.9 in
Height	2150 mm / 84.6 in	1461 mm / 57.5 in
Dry Weight	3000 kg / 6614 lbs	2500 kg / 5512 lbs



FEATURES

Engine and Block

- Cast-iron cylinder block with inspection door per cylinder
- Cast iron, wet cylinder liners
- High strength alloy steel forged crankshaft
- Oil cooled light alloy pistons with high performance piston rings

Intake Air and Exhaust System

- Separate cast iron cylinder heads with 4 valves
- Hardened Valves and Valve Seats
- Turbocharged and After Cooled
- Injection molded air filter
- Exhaust manifold shield for heat isolation

Fuel/Aftertreatment

- Natural Gas, Wellhead Gas, LPG
- 3-Way Catalyst

Cooling System

- Thermostatically-controlled system with belt driven coolant pump and pusher fan

Lubrication System

- Full flow screwable oil filters
- Oil purifier with replaceable cartridge
- Water cooled lube oil cooler
- Manual oil pump, pre-lubricates the engine and ensures good startability

Engine Control System

- US Proven ECU, Fuel System and Engine Control
- Engine Protection
- CANBUS J1939 Interface
- Telematics Compatibility

Flywheel and Housing

- Variety of Flywheels (14", 18"), Ring Gears and Housing available (SAE #0, #1)

Give us a call at 847-725-7030 for more information about our products.



Weichai America Corp.
3100 Golf Road
Rolling Meadows, IL 60008
(847) 725-7030

Sales@WeichaiAmerica.com

Visit us on the web at:
<http://www.WeichaiAmerica.com>